

HighPoint Chameleon

Dynamic Hardware and Software
Solutions for Entry Level Storage Configurations

HighPoint Chameleon is a series of robust, highly configurable software packages available for the RocketRAID 2700 6Gb/s SAS PCI-E Gen 2 RAID HBA family. HighPoint Chameleon allows System Integrators to quickly tailor cost effective 6Gb/s SAS Storage Solutions for integration into a variety of high-density applications.

Solutions powered by HighPoint Chameleon can easily adapt to wide range of storage technologies and configurations, simplifying the production process and reducing deployment time. HighPoint Chameleon supports RAID and Non-RAID configurations and delivers Dynamic Expansion services to best serve client's growing storage requirements.

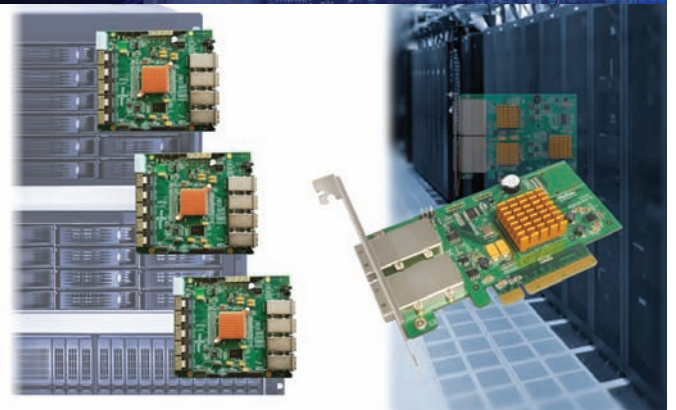
SATA JBOD Device Solutions



HighPoint's SATA JBOD Storage Device Solutions are ideal for Applications that demand low-cost, high-capacity storage. SATA JBOD Devices double the storage capability of each SAS 6Gb/s port, and can support up to 96TB per HBA.

SAS JBOD Device Solutions

Applications that strike a balance between performance and storage capacity will benefit from HighPoint's SAS JBOD Storage Device Package, which support cascade configurations up to 128 SAS/SATA drives, and provide 6Gb's bandwidth for both host and target storage devices.



Direct Connectivity Solutions



Customers seeking to maximize the performance potential of their SAS and SATA disks can rely on RocketRAID 2700 High Port Count PCI-E gen 2 x16 HBA's, which can directly support up to 32 6Gb's HDD or SSD's and deliver transfer bandwidths up 19200 MB/s.



HighPoint Chameleon

Dynamic Hardware and Software
Solutions for Entry Level Storage Configurations

RAID 6 is No longer a Luxury

HighPoint Delivers RAID 6 for Entry-Level Storage Configurations

Data-protection solutions implement various RAID technologies to protect client investments. Conventional products utilize RAID 5 configurations, which provide a good balance of cost savings, storage capacity and data protection. RAID 5 protects an array against a single disk failure, and is well suited to smaller configurations comprised of 5 or fewer hard disks.

However, as individual hard disks become larger, and existing RAID arrays are expanded to include more and more drives to address the demands of an expanding business, SMB's are forced to confront the risks of multi-disk failure scenarios.

RAID 6 addresses these concerns, and provides an additional layer of data protection with dual-parity, which protects the RAID configuration against dual disk failures. Historically, RAID 6 has been a feature associated with high-dollar Enterprise Storage solutions. Priced out of reach for many SMB clients, dual-parity data protection has long been perceived as a luxury feature, exclusive to costly and complex hardware configurations.

HighPoint aims to change perceptions.

8-Port, Host RAID 6 for less than \$140

HighPoint is proud to announce the industry's first affordable RAID 6 HBA solutions, designed specifically for cost-effective Entry-Level Storage Applications. RocketRAID 272x Series are 8-Port, SAS/SATA 6Gb/s PCI-E Gen 2 RAID HBA's, and deliver dual-parity RAID 6, and are available for as low as \$137.

HighPoint's RocketRAID 2720SGL SAS 6b/s HBA revolutionizes the storage industry, delivering dual-parity RAID 6 data protection, for an unprecedented MSRP of \$137. The RocketRAID 2720 SGL is a 6Gb/s SAS/SATA PCI-E gen 2 x8 HBA, and directly supports up to 8 SAS or SATA storage devices via two industry standard SFF-8087 ports.





Dynamic Storage Expansion

Expand storage capacity while preserving storage investments.

HighPoint Chameleon delivers the flexibility System Integrators need to design and deploy tiered storage solutions. Tiered configurations allow clients to dynamically expand storage capabilities to keep pace with application workloads. Hard disks can be added to single disk and JBOD configurations on the fly, for immediate use while systems remain live.

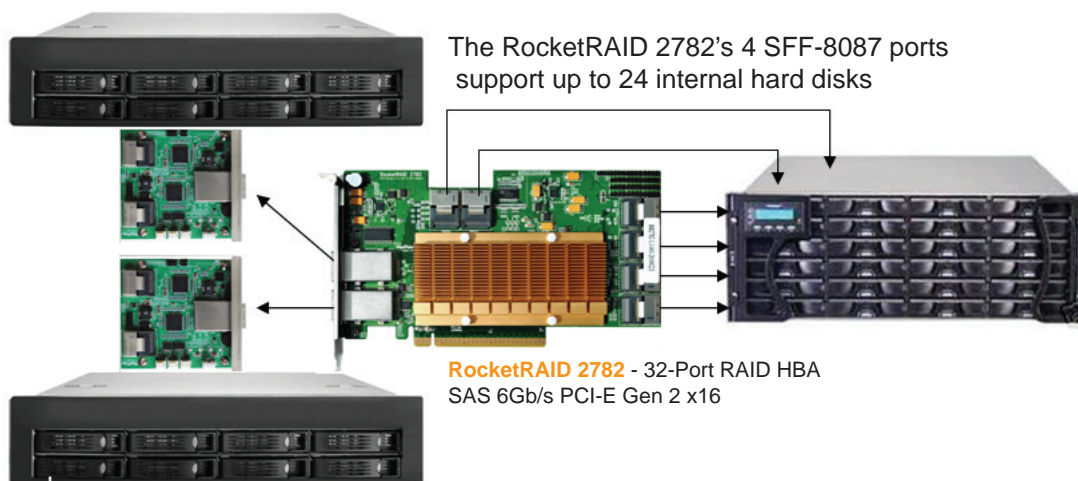
Advanced RAID features such as Online Capacity Expansion (OCE) and Online RAID Level Migration (ORLE) allow clients to expand, upgrade or convert existing RAID configurations as needed without compromising data.

Rocket RAID 2700 Hybrid HBA's - Storage Expansion Ready

RocketRAID 2700 Hybrid HBA's feature both internal and external Mini-SAS ports, and are ideal for clients that require storage solutions with integrated expansion capabilities. The internal ports provide direct connections for up to 24 HDD's, while the external ports allow clients to expand available storage to target-side appliances, as needed.

Chameleon SATA JBOD Solution

Storage Expansion Ready: RocketRAID 2782 HBA with two EJ220 JBOD Devices



The 2 SFF-8088 ports provide clients with built-in storage expansion capability, and can directly support up to 8 hard drives, and up to 16 when paired with EJ220 Devices.



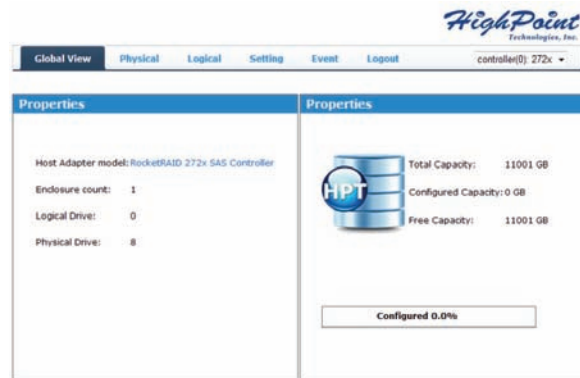
Unified Storage Management Suite

HighPoint Chameleon provides a comprehensive selection of Storage Management, Monitoring and Notification services, unified by an intuitive Web-based Interface know as the Storage Management Suite.

Storage Overview

Check Available Storage with a single click.

The Storage Overview provides a clear, concise summary of all hosted storage devices, including configured disk space, available capacity, and the status of individual drives, enclosures, HBA hardware, and multi-disk configurations.



Configure and Manage Storage Devices

HighPoint's Storage Management Suite allows administrators to quickly and easily configure available devices into single-disk, JBOD and RAID configurations. A real-time event log records administrative actions and error/warning conditions issued for all hosted storage devices. Email notification and alert services to keep abreast of changing storage conditions.

Logical Device Information							
Name	Type	Capacity	Cache Policy	BlockSize	SectorSize	OS Name	Status
Physical Device Information							
Location	Model	Capacity	Max Free				
1/1/1	WDC WD2003FYYS-02W080-WD-WHAY0016350	2.00 TB	2.00 TB				
1/1/2	WDC WD2002FFYS-02W380-WD-WCAV1723094	2.00 TB	2.00 TB				
1/1/3	WDC WD2003FFYS-02W080-WD-WHAY0020498	2.00 TB	2.00 TB				
1/1/4	WDC WD2002FFYS-01U180-WD-WCAV0102826	2.00 TB	2.00 TB				
1/1/5	WDC WD1003FBYX-01Y780-WD-WCAW30021063	1.00 TB	1.00 TB				
1/1/6	WDC WD5003ABYX-01W780-WD-WHAYP0015471	500.02 GB	500.02 GB				
1/1/7	WDC WD5003ABYX-01W780-WD-WHAYP0014682	500.02 GB	500.02 GB				
1/1/8	WDC WD1003FBYX-01Y780-WD-WCAW30022192	1.00 TB	1.00 TB				

Monitor Critical enclosure Components

Maintaining the Health of the Storage Environment

The Storage Management suite includes a selection of real-time enclosure monitoring services, which report the status of critical chassis components and environmental conditions.

Administrators can monitor the status of power supply units, voltage and the ambient temperature of storage enclosures. Administrators can establish thresholds and enable warning systems to match the specific needs of each storage configuration, and adjust fan speeds in order to maintain stable operating conditions.

Enclosure Information				
Enclosure Name: HighPoint E3220				
Enclosure ID: 2				
Fans: (3)				
Fans Control: Control by Board Temperature Sensor [Set]				
Fan Name	Fan Speed(RPM)	Fan Status		
Fan #1	1336	OK		
Fan #2	1667	OK		
Fan #3	0	N/A		
Temperature Sensor:(2)				
Name	Temperature(°C)	Status	Beeper Threshold(°C)	
Board Temperature	34.00	Normal	65 [Set]	
Additional Temperature	N/A	Not Installed	65 [Set]	
Voltage Sensor:(4)				
Name	Voltage(V)	Status		
1.2V Monitor	1.20	OK		
3.3V Monitor	3.27	OK		
5.0V Monitor	5.07	OK		
12V Monitor	11.97	OK		



HighPoint Chameleon

Dynamic Hardware and Software
Solutions for Entry Level Storage Configurations

About HighPoint

HighPoint designs and manufactures a full spectrum of SAS and SATA HBA's with Management Solutions for wide scale Storage Applications. We are long recognized as an innovator of RAID HBA technology and have continuously developed cutting edge RAID solutions to satisfy the industry's evolving storage requirements.

HighPoint is the SAS and SATA Storage Industry price leader for all OEM/ODM, SMB and Enterprise HBA's. HighPoint has a successful track record of delivering products to fortune 500 companies and global storage providers.

HighPoint has regional sales offices and world-wide distribution networks to better serve customers locally.

HighPoint Headquarters

Phone 1-408-942-5800
Fax 1-408-942-5801
E-mail sales@highpoint-tech.com
Website www.highpoint-tech.com
Address 1161 Cadillac Ct. Milpitas
CA, 95035

HighPoint Taiwan

Phone + 886-2-2218-3435
Fax + 886-2-2218-3436
E-mail sales@highpoint-tech.com
Website www.highpoint-tech.com
Address 5F.,No.3,Swei Lane, hongjheng
Rd., Sindian City,Taipei County
231, Taiwan (R.O.C.)

HighPoint China

Phone + 86-10-6213-0920
Fax + 86-10-6897-5074
E-mail sales@highpoint-tech.cn
Website www.highpoint-tech.cn
Address 4th Floor Kechafulin Building,
NO. 12 Zhong Guan Cun South
Rd, Aidian District Beijing
China 100081